

Botanical Survey



Ribbons of Remnant Roadsides



OLD HIGHLANDS ROAD
HIGHLANDS

20th OCTOBER 2017

By Janet Hagen



214 Welby Track Ruffly 3666

Landline : 03 57904268
Mobile : 0458 904268 (Janet)
Mobile : 0427 524473 (Justus)
Email addresses :
janethhagen@gmail.com
jjmhagen@yahoo.com.au

Janet & Justus Hagen
Landscape Restoration Projects

Management Plans
Seed Collection &
Direct Seeding

Old Highlands Road

Key Conservation Values Map

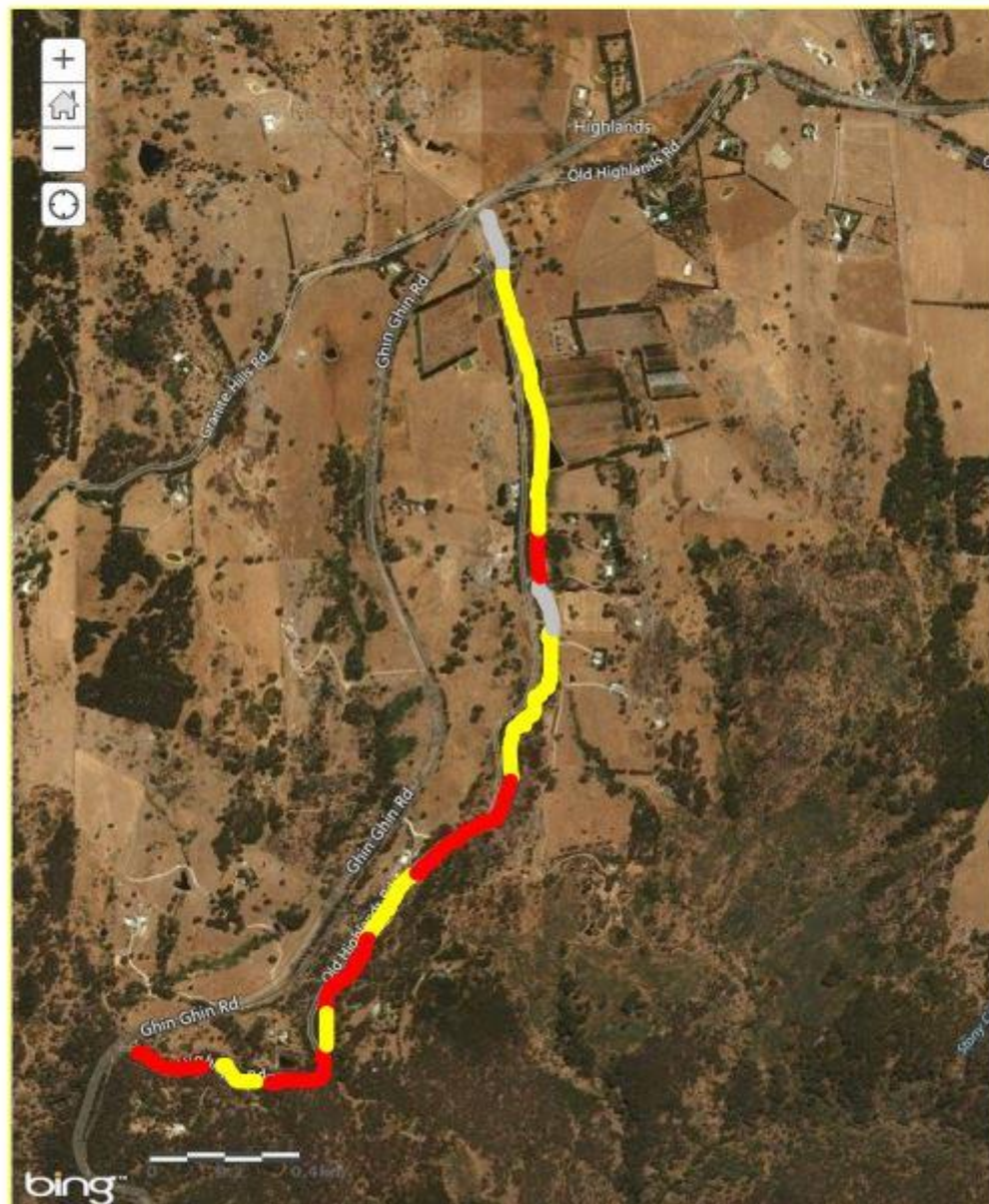
HIGH



MEDIUM



LOW



OLD HIGHLANDS ROAD Botanical REPORT 20/10/2017

By Janet Hagen

Bio region : Southern Highlands Northern Fall

Location: Highlands -37.090519 145.402177 to -37.112179 145.388410

Surveying downhill in a southerly direction.

Best vegetation is on the uphill side of the road due to the steep terrain.

1. Starting point 0km – .1km -The end of Old Highlands road closest to the Highlands Hall.

EVC 23 Herb Rich Foothills Forest

Structure: Exotic pasture grasses

Species composition : Bent grass, Sweet vernal grass, Onion grass, Annual veldt grass, Quaking grass , Yorkshire fog grass, Squirrel-tail fescue, Flat weed.

High Threat Weeds: None

Quality Assessment : This section of the roadside is regularly grazed by stock, gates and electric fences have been erected by an adjoining landholder. **LOW CONSERVATION VALUE**

2. .1kms - .4kms

EVC 23 Herb Rich Foothills Forest

Structure: Scattered trees and shrubs over exotic grasses.

Species composition Acacia melanoxylon, Eucalyptus radiata, Melicytus dentatus

High Threat Weeds: Garden escapees such as Agapanthus, Wild Plum Trees and Ivy.

Quality Assessment : Partly vegetated with native species. Tree violet seedlings regenerating. Moderate site disturbance. **Medium Conservation value**

3. .4kms - .7kms

EVC 23 Herb Rich Foothills Forest

Structure: Mature Trees with hollows, Trees and tall shrubs. Exotic pasture grasses.

Species composition: Acacia melanoxylon, Eucalyptus radiata, Eucalyptus obliqua

High Threat Weeds: Elm trees and suckers

Quality Assessment: Some habitat value in the mature trees, ground layer depleted due to stock grazing this section of roadside. **Low Conservation values**

4. .7ms - .8kms

EVC 23 Herb Rich Foothills Forest

Structure: Mature Trees with hollows, Trees and tall shrubs. Exotic pasture grasses.

Species composition: Acacia melanoxylon, Eucalyptus radiata, Eucalyptus obliqua, Leptospermum continentale, Acacia dealbata.

High Threat Weeds: Nil

Quality Assessment: This section contains a wetter area with tea trees, tall trees with hollows and some light leaf litter. Disturbance is moderate and **MEDIUM CONSERVATION VALUE** . A few silver wattles are regenerating.

5. .8kms – 1.4kms

EVC 23 Herb Rich Foothills Forest

Structure: Scattered mature trees

Species composition: Cleared

High Threat Weeds : Mature Pine trees grow on the roadside and are producing seedlings.

Quality Assessment: Substantially modified. Regularly mowed. **LOW CONSERVATION VALUE.**

6. 1.4kms -2kms

EVC 23 Herb Rich Foothills Forest

Structure: Mature trees with tall understorey shrubs, bracken and exotic grasses.

Species composition: Eucalyptus radiata, Eucalyptus macrorhyncha, Acacia melanoxylon, Acacia dealbata,

High Threat Weeds: English Broom, Pine seedlings.

Quality Assessment: Partly vegetated with moderate disturbance. **MEDIUM CONSERVATION VALUE.**

7. 2kms – 2.7kms

EVC 23 Herb Rich Foothills Forest

Structure: All structural elements present. Mature trees with hollows, trees and shrubs, understorey plants, native grasses, leaf litter, fallen branches, logs and rocks.

Species composition:

Eucalyptus dives Eucalyptus rubida, Eucalyptus macrorhyncha, Exocarpus cupressiformis, Cassinia aculeate, Daviesia latifolia, Dianella admixta, Glycine clandestina, Hovea linearis, Pteridium esculentum, Senecio quadridentatus, Iomandra longifolia,

High Threat Weeds: NIL

Quality assessment : Fully vegetated wildlife corridor, natural regeneration extensive, near natural site with very little disturbance. **HIGH CONSERVATION VALUE**

8. 2.7ms- 3.1kms

EVC 72 Granitic Hills Woodland – Rocky Outcrop.

Structure: : Fully vegetated with all structural elements present. Mature trees with hollows, trees and shrubs, understorey plants, native grasses, leaf litter, fallen branches, logs.

In near natural condition.

Species content : Eucalyptus bicostata , Eucalyptus goniocalyx, Daviesia leptophylla, Kunzea ericoides, Hardenbergia violacea, Isotoma axillaris, Pimelea humilis, Xerochrysum viscosum, Lomandra longifolia, Dianella admixta.

High Threat Weeds: NIL (Note the native plant Bergan could colonise the site)

Quality assessment: An isolated pocket of Rocky Outcrop species exist along this section of Old Highlands Rd. Sticky Everlasting and Rock isotome are uncommon in the area. Excellent fauna habitat. Links to other high quality remnants. Minor disturbance by roadworks. Plentiful ground cover with rocks and logs. **HIGH CONSERVATION VALUES**

9. 3.1kms 3.3kms

EVC 22 Grassy Dry Forest

Structure : Dense ground layer of tufted native grasses and small shrubs (narrow leaf bitter pea.) and wildflowers. Abundant native orchids in season but not flowering at the time of my survey. Tiger orchids & golden moths . Overstorey of Lightwood, red stringybark, long-leafed box and blue gums. Rocky surface.

Near natural condition

Species content :

Eucalyptus goniocalyx, Eucalyptus bicostata, Eucalyptus macrorhyncha, Acacia implexa. Red Anther wallaby Grass, Daviesia latifolia, Daviesia leptophylla, Hibbertia obtusifolia, Pimelea humilis,

Lomandra filiformis, Arthropodium strictum, B3.3kms ulbine bulbosa, Burchardia umbellate, Thysanotus patersonii, Wurmbea dioica. Goodenia hederacea, Microseris scapigera,

High threat Weed Risk: Low - Invasion by exotic grasses.

Quality assessment : This section of the roadside contains a high quality herb and shrub layer. Yam daisies and ivy leaf goodenia are highlights. Good wildlife habitat with a **HIGH CONSERVATION VALUE**

10. 3.3kms – 3.4kms

EVC 23 Herb Rich Foothills Forest - LEAST CONCERN

Small damp zone: Gahnia radula – Thatch Saw Sedge, Bracken & Cassinia longifolia –Shiny cassinia.

Structure: All habitat elements present. Partly vegetated. Moderate site disturbance due to roadworks in improve drainage.

Species content: Acacia melanoxylon, Eucalyptus bicostata, Gahnia radula, Bracken, Cassinia longifolia.

High threat weeds: Yorkshire Fog Grass.

Quality assessment: Moderate regeneration of native species occurring. Site fully vegetated with moderate disturbance. **MODERATE CONSERVATION VALUE**

****Geology changes at this point .We are on the dividing line between the granitic rocks and sedimentary rocks “Iron Stone Country” Metamorphic areole**

11. 3.4kms – 3.6kms

EVC 22 Grassy Dry Forest – LEAST CONCERN

Structure: All habitat elements are present on this near natural section of the Old Highlands Rd. Small shrubs and ground layer are healthy and diverse. Pea Bushes were in full flower with three species of Daviesia observed. Tufted grasses are a feature of this section .Dominant species -Red anther wallaby Grass. Many herbs and wildflowers, the most obvious at the time of survey were yam daisies and ivy leaf goodenia.

Species content: Eucalyptus gonicalyx, Eucalyptus macrorhyncha, Exocarpus cupressiformis, Daviesia latifolia, Daviesia leptophylla, Daviesia ulicifolia, Indigofera australis, Joycea pallida, Asperula scoparia, Stellaria purgens, gonocarpus elatus, Hardenbergia violacea, Arthropodium strictum, Lomandra filiformis, Microseris scapigera.

High Threat Weeds: Nil

Quality assessment: : This section of the roadside contains a high quality ground and shrub layer.

Red Anther wallaby Grass , Pea –bushes, Yam daisies and ivy leaf goodenia are highlights.

Good wildlife habitat with a **HIGH CONSERVATION VALUE**

12. 3.6km – 3.8kms

EVC 23 Herb Rich Foothills Forest - LEAST CONCERN

Structure: Bend in the road with a moister cooler aspect. Overstorey and taller shrubs. Moderate disturbance.

Species Content: Shiny cassinia, bracken and Broadleaf Peppermint

High Threat Weeds: Exotic Grasses and pasture weeds

Quality assessment : High habitat value & **MEDIUM CONSERVATION VALUE**

13. 3.8kms – 4.1kms Sections ends at the Ghinn Ghinn Road

EVC 22 Grassy Dry Forest – LEAST CONCERN

Structure: All habitat elements are present on this near natural section of the Old Highlands Rd. Small shrubs and ground layer are healthy and diverse. Pea Bushes were in full flower with three species of Daviesia observed. Tufted grasses are a feature of this section .Dominant species -Red anther wallaby Grass. Many herbs and wildflowers, the most obvious at the time of survey were yam daisies and ivy leaf goodenia.

Species content: Eucalyptus goniocalyx, Eucaulptus macrorhychna, Exocarpus cupressiformis, Daviesia latifolia, Daviesia leptophylla, Daviesia ulicifolia, Indigofera australis, Joycea pallida, Asperula scoparia, Stellaria purgens, gonocarpus elatus, Hardenbergia violacea, Arthropodium strictum, Lomandra filoformis, Microseris scapigera.

High Threat Weeds: Nil

Quality assessment: : This section of the roadside contains a high quality ground and shrub layer. Red Anther wallaby Grass , Pea –bushes, Yam daisies and ivy leaf goodenia are highlights.

Good wildlife habitat with a **HIGH CONSERVATION VALUE**





Complete Species List for Old Highlands Road

Trees	
Acacia dealbata	Silver Wattle
Acacia implexa	Lightwood
Acacia mearnsii	Black Wattle
Acacia melanoxylon	Blackwood
Eucalyptus dives	Broadleaf Peppermint
Eucalyptus globulus bicostata	Blue Gum
Eucalyptus gonicalyx	Long Leaf Box
Eucalyptus macrorhyncha	Red Stringybark
Eucalyptus obliqua	Messmate
Eucalyptus radiata	Narrow leaf Peppermint
Exocarpus cupressiformis	Cherry Ballart
Amyema miquelii	Box Mistletoe
Amyema pendula	Drooping Mistletoe
Shrubs	
Kunzea ericoides	Burgan
Leptospermum continentale	Prickly Tea tree
Melicytus dentatus	Tree Violet
Cassinia aculeate	Common Cassinia
Cassinia longifolia	Shiny Cassinia
Daviesia latifolia	Hop Bitter Pea
Daviesia leptophylla	Narrow-leaf Bitter Pea
Daviesia ulicifolia	Gorse Bitter Pea
Indigofera australis	Austral Indigo
Herbs and Forbs	
Acaena novae-zelandiae	Bidgee Widgee
Asperula scoparia	Prickly Woodruff
Cymbonotus preissianus	Austral Bears Ear
Drosera peltata	Tall Sundew
Goodenia hederacea	Ivy Goodenia
Gonocarpus tetragynus	Hill Raspswort
Glycine clandestine	Twining Glycine
Hovea linearis	Common Hovea
Hibbertia obtusifolia	Grey Guinea Flower
Hardenbergia violacea	Purple Coral Pea
Isotoma axillaris	Rock Isotome
Lomandra filiformis	Wattle Mat-rush
Lomandra longifolia	Spiney Headed Mat-Rush
Microseris lanceolata	Yam Daisy
Oxalis corniculata	Yellow Wood Sorrel
Pimelea humilis	Common Rice Flower
Senecio linearifolius	Fireweed Groundsel
Senecio quadridentatus	Cotton Fireweed
Stellaria pungens	Prickly Starwort
Xerchrysum viscosum	Stricky Everlasting

Lilies and Orchids	
Burchardia umbellata	Milkmaids
Dianella admixta	Black Anther Flax Lily
Arthropodium strictum	Chocolate Lily
Bulbine bulbosa	Bulbine Lily
Wurmbea dioica	Early Nancy
Thysanotus patersonii	Twining Fringe -lily
Native Grasses	
Austrodanthonia pilosa	Velvet Wallaby Grass
Joycea pallida	Red Anther Wallaby Grass
Microlaena stipoides	Weeping Grass
Poa labillardierei	Common Tussock Grass
Ferns	
Pteridium esculentum	Bracken
Exotic Pasture Grasses and weeds	
Trifolium subterraneum	Subterranean Clover
Romulea rosea	Onion Grass
Rubus fruticosus	Blackberry – Not found but must be somewhere
Poa annua	Annual Meadow Grass
Poa bulbosa	Bulbous Meadow Grass
Holcus lanatus	Yorkshire Fog Grass
Festuca arundinacea	Tall Fescue
Festuca rubra	Red Fescue
Galium aparine	Cleavers
Cynosurus echinatus	Rough Dogs tail
Erodium cicutarium	Heron's Bill
Carduus pycnocephalus	Slender Thistle
Cerastium glomeratum	Common Mouse-ear Chick Weed
Briza maxima	Large Quaking Grass
Bromus rubens	Red Brome
Aira Caryophylla	Silvery Hair Grass
Anagallis arvensis	Pimpernel
Arctotheca calendula	Cape weed
Acetosella vulgaris	Sheep Sorrel
Vulpia bromoides	Squirrel – tailed Fescue
Hypochaeris radicata	Cat's Ear
Garden Escapees	
Agapanthus	
Plum / Prunus	
Pine	
Elm	
Ivy	
English Broom	